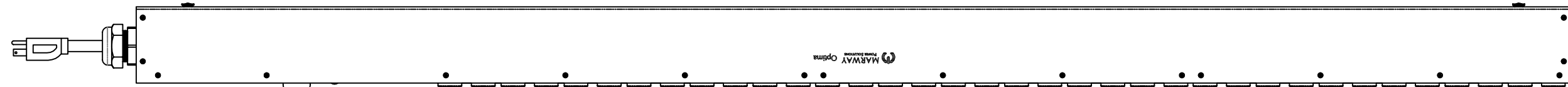
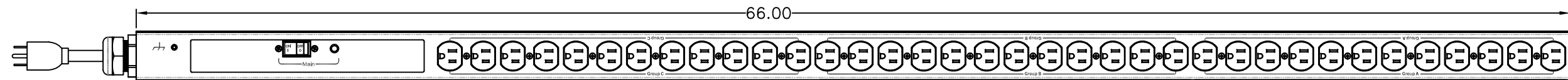


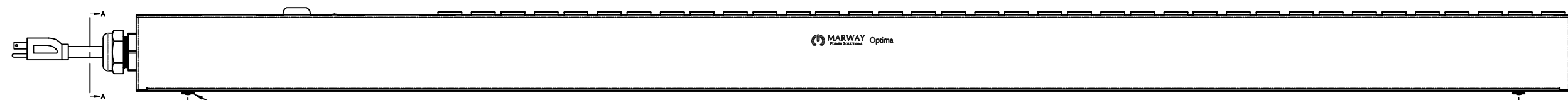
| REVISIONS | | | | |
|-----------|-----|-----------------|----------|----|
| ECN# | REV | DESCRIPTION | DATE | BY |
| | A | INITIAL RELEASE | 12/23/16 | HC |



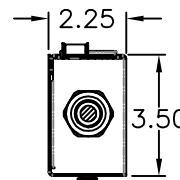
SIDE VIEW



FRONT VIEW



SIDE VIEW



SECTION VIEW A-A

| Configuration | Features | |
|----------------|-----------------------------|---|
| | Layout | Zero U |
| Input 1 | Voltage | 100-120 Vac, Single Phase, 50/60 Hz |
| | Max Current | 15 Amps |
| | Max Load | 1.44 KVA |
| | Connection | 5-15P, 14 ft cord, 3-wire 14 ga, SJT jacket (End panel) |
| | Voltage Monitor | None |
| | Current Monitor | None |
| Outlets | All Panels [1][2] | (36) 5-15R, 100-120V |
| | Protection | |
| | Spike/Surge Suppression [1] | None |
| | EMI Filter [1] | None |
| | Over Current [1] | (1) 15A Main Breaker |
| Env Sensors | Temperature | None |
| | Humidity | None |
| | Interlocks | None |
| | EPO | None |
| Communications | Display | None |
| | Serial | None |
| | Ethernet | None |
| | Protocols | None |

| Physical | Dimensions | 66" H x 2.25" W x 3.5" D |
|---|----------------------------|---|
| | Weight | 20 lbs Estimated |
| | Materials | Chassis: Steel |
| | Finishes | Chassis: Zinc plated Black, FrontPanel: Zinc plated Black |
| Operating | Temperature | 32°F to 122°F |
| | Humidity | 5 %RH to 85 %RH |
| | Elevation | 25,000 feet |
| Conformance | Warranty | http://www.marway.com/warranty |
| | Safety Certifications | None |
| | Environment Certifications | None |
| Notes: | | |
| [1] Certain details of the circuitry may only be revealed by the schematic (available separately) | | |
| [2] S = switched, V = monitored voltage, A = monitored amps | | |

| | | | | | |
|--|-----------|----------|---|------|----------|
| <small>UNLESS OTHERWISE SPECIFIED DIMENSIONS ARE IN INCHES TOLERANCES ARE: ANGLES DECIMALS ± .5" .00 ± .03 .000 ± .010 DO NOT SCALE DRAWING</small> | METAL NO. | SILK NO. | <p>1721 S. GRAND AVE. SANTA ANA, CA 92705 PH: (714) 917-6200 FX: (714) 917-6253</p> | | |
| | APPROVALS | | | DATE | |
| | DRAWN | | | HC | 12/23/16 |
| | CHECKED | | | | |
| FINISH: | APPROVED | | | | |
| <small>PROPRIETARY NOTICE THE INFORMATION CONTAINED IN THIS DRAWING IS THE SOLE PROPERTY OF MARWAY POWER SOLUTIONS ANY REPRODUCTION IN PART OR AS A WHOLE WITHOUT THE WRITTEN PERMISSION OF MARWAY POWER SOLUTIONS IS STRICTLY PROHIBITED.</small> | | | SIZE: D CAGE CODE: 60955 DWG NO.: 529005-000 REV: A | | |
| SCALE: P529005-000 REV A SHEET 1 OF 1 | | | | | |