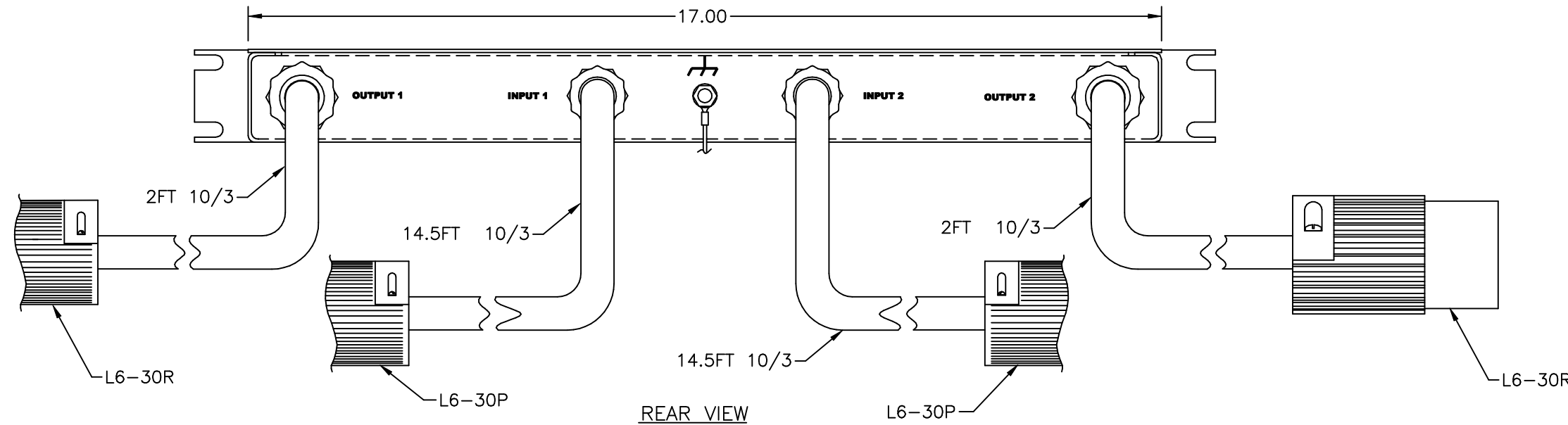
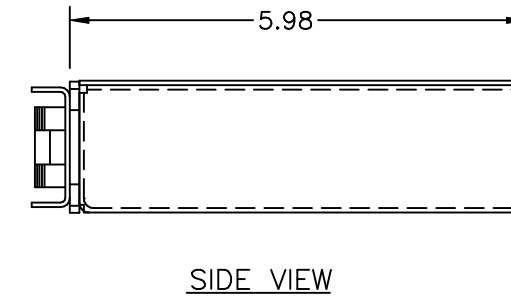
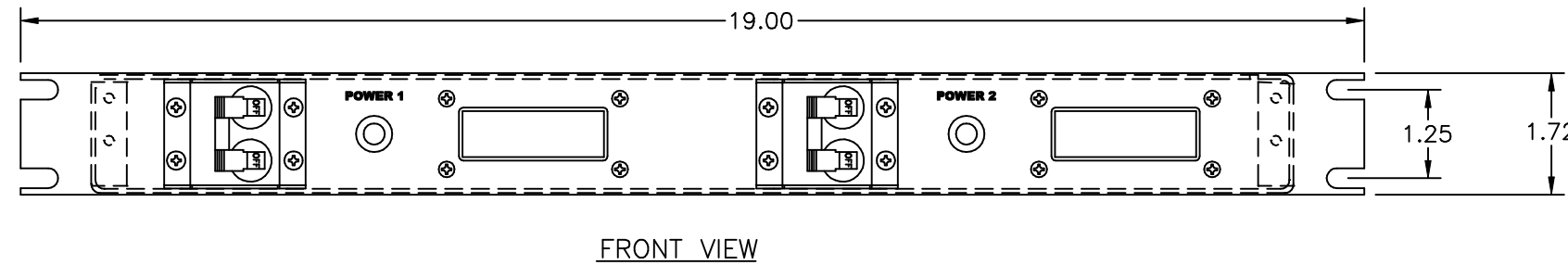


ECO#		REV	DESCRIPTION	DATE	BY
	A		INITIAL RELEASE	10/21/08	BR
	B		UPDATED SPECIFICATION TABLE	7/9/10	HC



Configuration	Type	Metered
	Layout	1 U
Input 1	Voltage	220 VAC, Single Phase, 50/60 Hz
	Max Current	30 Amps
	Max Load	5.28 KVA
	Connection	L6-30P, 14.5 ft cord, 3-wire 10 ga, SJT jacket (Rear panel)
	Voltage Monitor	None
	Current Monitor	Digital
Input 2	Voltage	220 VAC, Single Phase, 50/60 Hz
	Max Current	30 Amps
	Max Load	5.28 KVA
	Connection	L6-30P, 14.5 ft cord, 3-wire 10 ga, SJT jacket (Rear panel)
	Voltage Monitor	None
	Current Monitor	Digital
Outlets	All Panels [1][2]	(2) L6-30R, 220V (V,A)
Protection	Spike/Surge Suppression [1]	Yes
	EMI Filter [1]	None
	Over Current [1]	(2) 30A Main Breaker
Env Sensors	Temperature	None
	Humidity	None
	Interlocks	None
	EPO	None

Communications	Display	None
	Serial	None
	Ethernet	None
	Protocols	None
Physical	Dimensions	1 U x 19" W x 6" D
	Weight	lbs
	Materials	Chassis: Steel
	Finishes	Chassis: Zinc plated Gold, FrontPanel: Zinc plated Gold
Operating	Temperature	32°F to 122°F
	Humidity	5 %RH to 85 %RH
	Elevation	25,000 feet
Conformance	Warranty	<a href="http://www.marway.com/warranty">http://www.marway.com/warranty</a>
	Safety Certifications	None
	Environment Certifications	None
Notes:		
[1] Certain details of the circuitry may only be revealed by the schematic (available separately)		
[2] S = switched, V = monitored voltage, A = monitored amps		

**PROPRIETARY NOTICE**  
 ALL PATENT OR OTHER PROPRIETARY RIGHTS PERTAINING TO THE ITEMS SOLD HERE UNDER SHALL REMAIN THE SOLE PROPERTY OF MARWAY POWER SOLUTIONS EXCEPT THAT THE PURCHASER SHALL HAVE THE RIGHT TO USE SUCH ITEMS FOR THEIR INTENDED PURPOSE.

UNLESS OTHERWISE SPECIFIED DIMENSIONS ARE IN INCHES TOLERANCES ARE: ANGLES DECIMALS ± 1/2° .XX ± .03 .XXX ± .010 DO NOT SCALE DRAWING		MATERIAL:		FINISH:	
METAL NO.		SILK NO.		DATE	
APPROVALS		DRAWN		10/21/08	
CHECKED		BR			
APPROVED					
SIZE		FSCM NO.		DWG NO.	
D		60955		411341-011	
SCALE		NONE		P411341-011 REV B SHEET 1 OF 1	

**MARWAY POWER SOLUTIONS**  
 17500 GILLETTE AVE.  
 IRVINE, CA 92614  
 Ph (714) 917-6200  
 FAX (714) 917-6253  
 TOLL FREE 800 462-7929

**SPECIFICATION DRAWING—**  
 MPD 411341-011