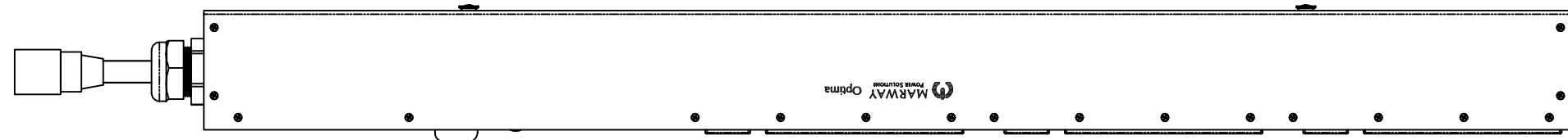
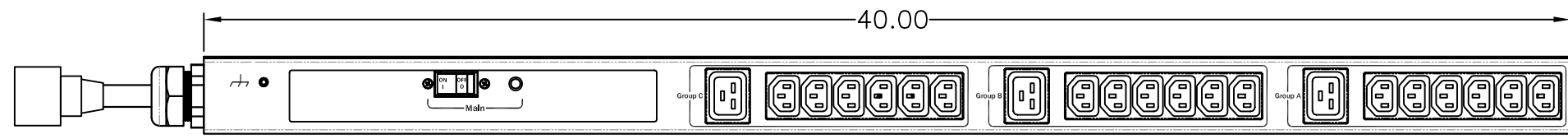


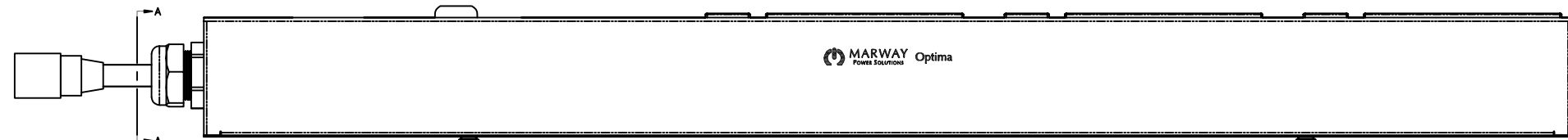
| REVISIONS | | | | |
|-----------|-----|-----------------|----------|----|
| ECN# | REV | DESCRIPTION | DATE | BY |
| | A | INITIAL RELEASE | 12/23/16 | HC |



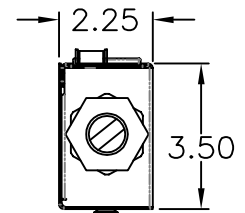
SIDE VIEW



FRONT VIEW



SIDE VIEW



SECTION VIEW A-A

| Configuration | Features | |
|----------------|-----------------------------|---|
| | Layout | Zero U |
| Input 1 | Voltage | 100-240 Vac, Single Phase, 50/60 Hz |
| | Max Current | 20 Amps |
| | Max Load | 3.84 KVA |
| | Connection | C20, 14 ft cord, 3-wire 12 ga, SJT jacket (End panel) |
| | Voltage Monitor | None |
| | Current Monitor | None |
| | Outlets | All Panels [1][2] |
| Protection | | (18) C13, 100-240V |
| | | (3) C19, 100-240V |
| | Spike/Surge Suppression [1] | None |
| | EMI Filter [1] | None |
| Env Sensors | Over Current [1] | (1) 20A Main Breaker |
| | Temperature | None |
| | Humidity | None |
| | Interlocks | None |
| Communications | EPO | None |
| | Display | None |
| | Serial | None |
| | Ethernet | None |
| | Protocols | None |

| | | |
|---|----------------------------|---|
| Physical | Dimensions | 40" H x 2.25" W x 3.5" D |
| | Weight | 11 lbs Estimated |
| | Materials | Chassis: Steel |
| | Finishes | Chassis: Zinc plated Black, FrontPanel: Zinc plated Black |
| Operating | Temperature | 32°F to 122°F |
| | Humidity | 5 %RH to 85 %RH |
| | Elevation | 25,000 feet |
| Conformance | Warranty | http://www.marway.com/warranty |
| | Safety Certifications | None |
| | Environment Certifications | None |
| Notes: | | |
| [1] Certain details of the circuitry may only be revealed by the schematic (available separately) | | |
| [2] S = switched, V = monitored voltage, A = monitored amps | | |

| | | | | | |
|---|--|-----------|----------|---|--------------------------------|
| UNLESS OTHERWISE SPECIFIED DIMENSIONS ARE IN INCHES TOLERANCES ARE: ANGLES DECIMALS ± .5° .XX ± .03 XXX ± .010 DO NOT SCALE DRAWING | | METAL NO. | SILK NO. | 1721 S. GRAND AVE. SANTA ANA, CA 92705 PH: (714) 917-6200 FX: (714) 917-6253 | |
| APPROVALS | | DATE | | SPECIFICATION DRAWING-- MPD 529010-000 | |
| MATERIAL: | DRAWN | HC | 12/23/16 | SIZE | CAGE CODE |
| | CHECKED | | | D | 60955 |
| | APPROVED | | | DWG NO. | 529010-000 |
| FINISH: | PROPRIETARY NOTICE THE INFORMATION CONTAINED IN THIS DRAWING IS THE SOLE PROPERTY OF MARWAY POWER SOLUTIONS ANY REPRODUCTION IN PART OR AS A WHOLE WITHOUT THE WRITTEN PERMISSION OF MARWAY POWER SOLUTIONS IS STRICTLY PROHIBITED. | | SCALE | COMPUTER FILE NO. | P529010-000 REV A SHEET 1 OF 1 |